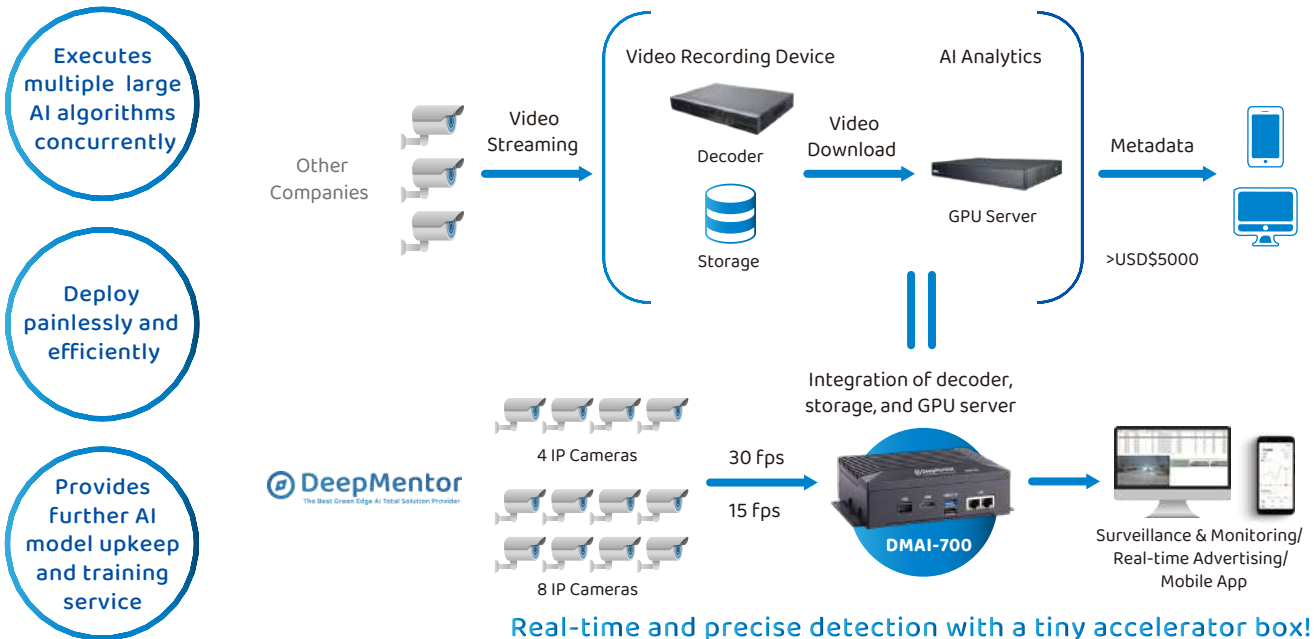


DeepMentor Edge AI Accelerator

AI Deployment Hardware & Software Total Solution

DMAI-700, a palm-sized Edge AI accelerator of DeepMentor, can perform AI operations at the edge and greatly save data transmission volume and time. Combined with DeepMentor's miniaturization technology, multiple accurate AI models can be executed simultaneously on our palm-sized device, providing the best AI performance in various fields.



Executes multiple large AI algorithms concurrently

Deploy painlessly and efficiently

Provides further AI model upkeep and training service

Real-time and precise detection with a tiny accelerator box!

DeepMentor has patented miniaturization technology, which can run large and complex algorithms on Edge AI. Therefore, no need to deal with the inaccuracies of small AI algorithms and avoid the cumbersome optimization of the algorithms.

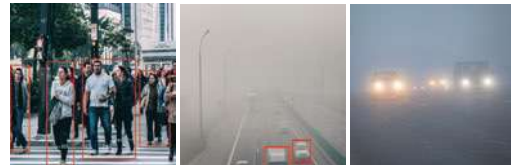
DeepMentor

utilizes large and professional algorithms that have high detection precision






Other Local Devices

are limited to small AI algorithms that have low detection precision.



Three Main Application Systems of DeepMentor

-  **Intelligent Traffic**
-  **Intelligent Factory**
-  **Security Monitoring**

Speed detection / Traffic counting / Traffic flow tracking / Accident, congestion, parking violation warning / Vehicle classification

Defect detection & classification / Abnormal noise detection / Behavior detection

Geofencing / People flow hotspot / People flow tracking / Loitering detection / Parking space detection / Face recognition

Intelligent Traffic System

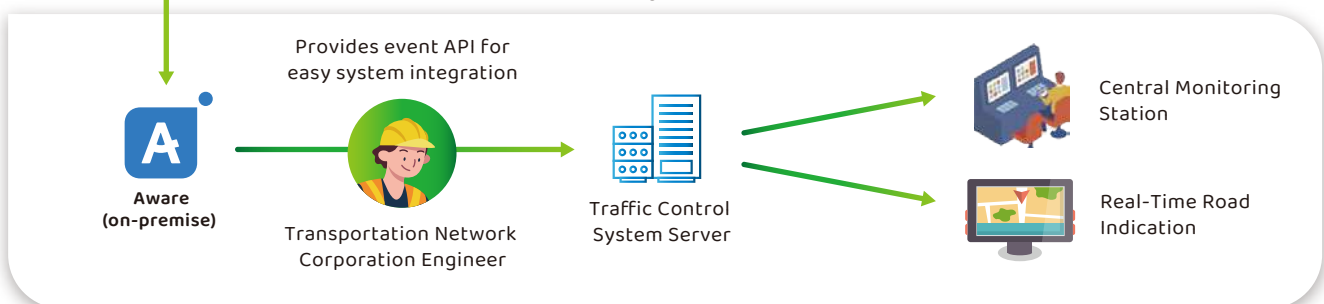
DMAI-700 is the super efficient complete solution of DeepMentor that can leverage Edge AI to realize intelligent traffic. Traffic images can be analyzed on DMAI-700, achieving real-time warnings of traffic incidents. Therefore, it can effectively assist traffic and police departments in managing complex traffic situations, carrying out technological law enforcement, and formulating road accident response measures. Provide the city with a smooth, convenient and safe traffic environment.

Service Process Flow

Road End



Computer Facility End



Algorithms that have already undergone real-world scenario testing :

Speed detection / Traffic counting / Traffic flow tracking / Accident, congestion, parking violation warning / Vehicle classification

- Accurate recognition night and day from different angles
- Able to link multiple vicinal cameras for object tracking



AI

DMAI-700

Fanless Edge AI Computer Vision System with Hailo-8™ Processor, HDMI, GbE LAN, USB 3.2, DIO, and Wi-Fi/Bluetooth/5G/LTE Wireless Connection

HAILO
Empowering Intelligence



Features

- Hailo-8™ AI processor, up to 26 TOPS
- Palm size with high AI computing performance
- Supports dual GbE LAN for cameras
- Supports Wi-Fi/Bluetooth/5G/LTE wireless connection
- Wide operating temperature from -10°C to +70°C
- Wide voltage input from 12 to 24 VDC
- Supports Windows 11 & Linux
- Ideal for edge AI smart city applications



Specifications

Standard Color	Black
Construction	Aluminum extrusion and heavy-duty steel, IP30
CPU	Intel® Elkhart Lake processor
AI Accelerator	Hailo-8™ SoC, up to 26 TOPS
System Memory	1 x DDR4 SO-DIMM slot, up to 32GB
System I/O Outlet	1 x HDMI 1.4 with 4K2K supported 2 x 10/100/1000 Mbps Ethernet 1 x USB 3.2 Gen1 1 x USB 2.0 1 x 8-CH DI/DO 1 x 12 to 24 VDC power input 1 x Reset button 4 x SMA-type antenna connector
Storage	1 x M.2 Key B 2242 SSD slot (SATA3)
Expansion Interface	1 x M.2 Key E 2230 for Wi-Fi/Bluetooth 1 x M.2 Key B 3052 for 5G 1 x Wafer for RS-232/485 1 x SIM slot
System Indicator	1 x Green LED for system power-on 1 x Yellow LED for M.2 storage
Power Supply	12 to 24 VDC
Operating Temperature	-10°C to +70°C (14°F to +158°F) (H) -10°C to +60°C (14°F to +140°F) (S)
Humidity	10% - 95%, non-condensing
Vibration Endurance	3 Grms (5 to 500Hz, X, Y, Z directions)
Dimensions	150.0 mm (5.91") (W) x 111.0 mm (4.37") (D) x 71.7 mm (2.82") (H) 150.0 mm (5.91") (W) x 111.0 mm (4.37") (D) x 49.4 mm (1.94") (S)
Weight (net/gross)	1.5 kg (3.32 lb) (H) 1.0 kg (2.20 lb) (S)
Certifications	CE, FCC Class A
OS Support	Windows 11 & Linux

Packing List

1 x Screw pack

Ordering Information

Standard

DMAI-700-S	Fanless edge AI system with Hailo-8 accelerator, Intel® Celeron® processor J6413, HDMI, 2 GbE LAN, 2 USB, and 8-CH DI/DO, standard heatsink
DMAI-700-H	Fanless edge AI system with Hailo-8 accelerator, Intel® Celeron® processor J6413, HDMI, 2 GbE LAN, 2 USB, and 8-CH DI/DO, high heatsink

Optional Accessory

- Wall mount kit
- DDR4 SO-DIMM module
- M.2 SATA SSD module
- Wi-Fi/Bluetooth module
- 5G module
- LTE module
- Power adapter 12V/60W
- Power cord

* Specifications and certifications may vary based on different requirements.

