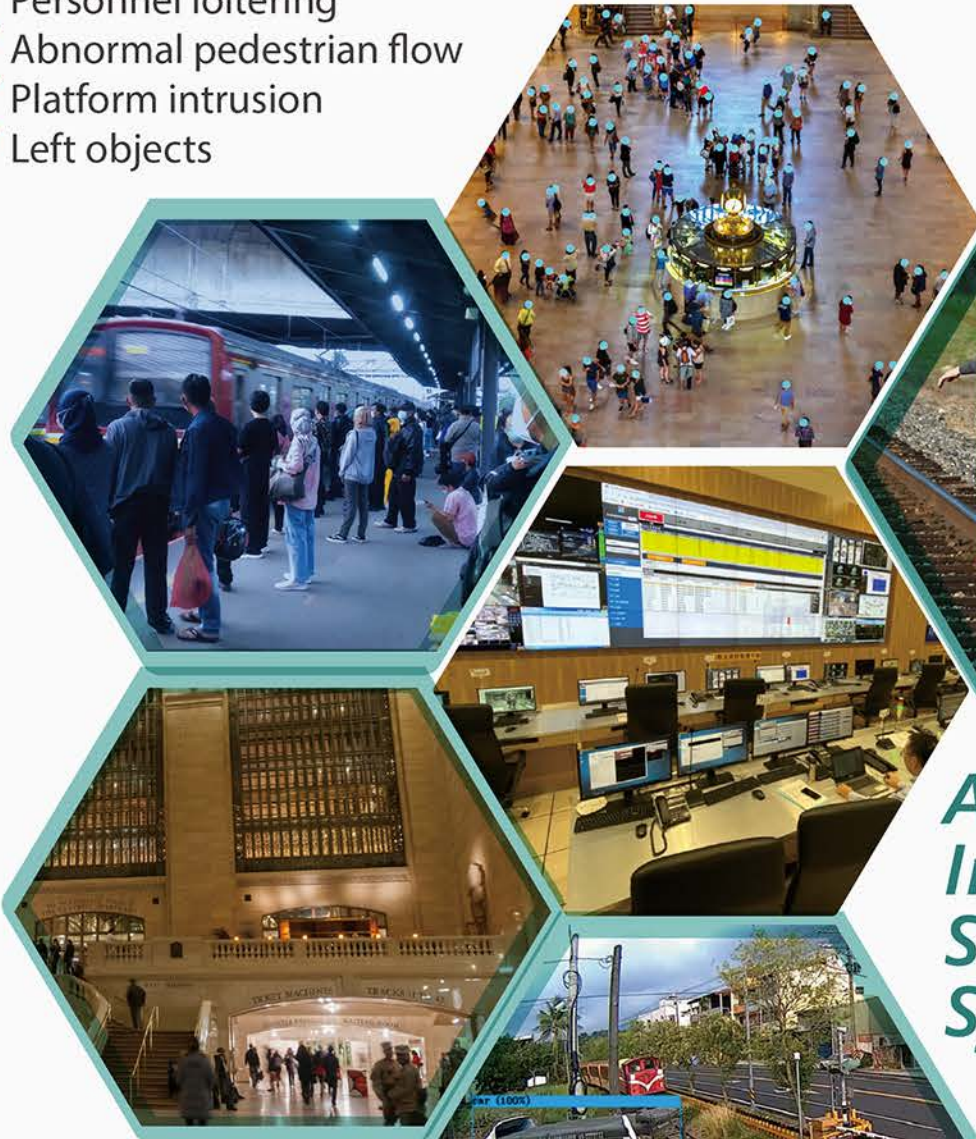


Using AIoT technology, we construct a passenger flow and platform safety event detection and management system for railway stations; prevent personnel and vehicles from crossing at level crossings and objects from scattering in passageways; detect personnel loitering, crossing and rock falls along the track; and perform environmental monitoring and abnormality reporting management for mechanical and electrical facilities in the track.

1 Station Event Detection

- ✓ Personnel loitering
- ✓ Abnormal pedestrian flow
- ✓ Platform intrusion
- ✓ Left objects



3 Track Abnormality Detection

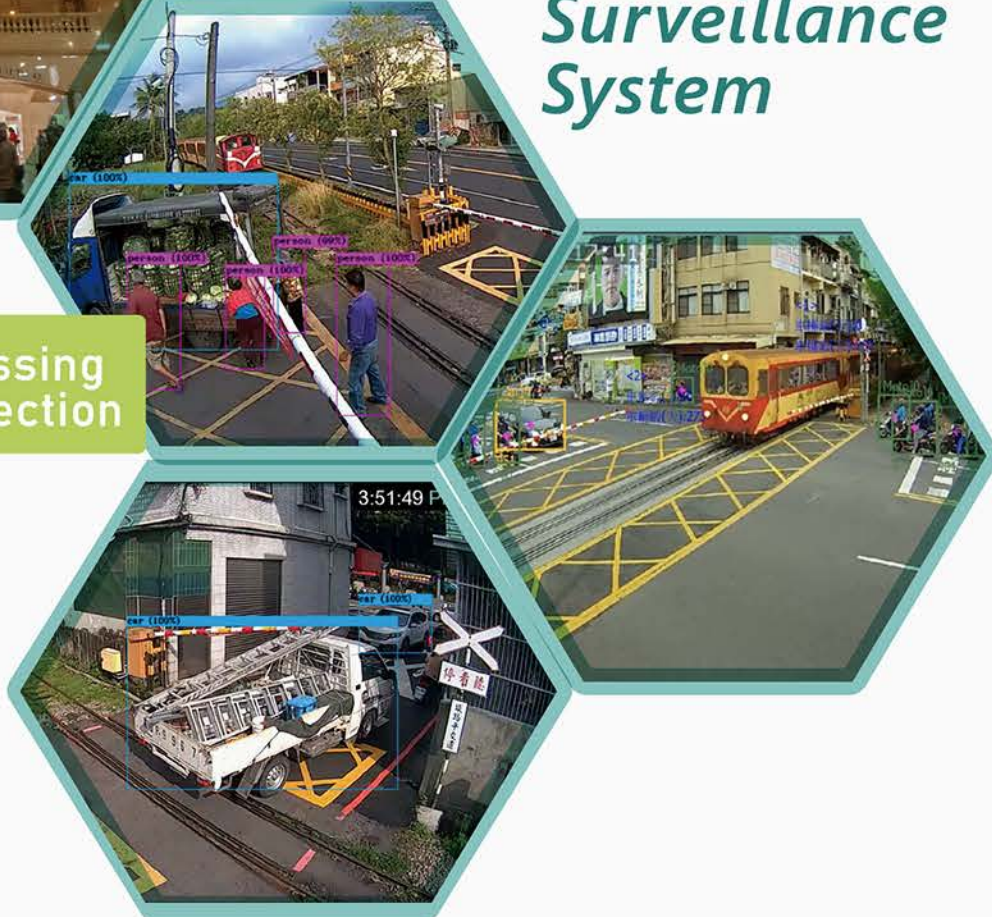
- ✓ Railway obstacle intrusion.
- ✓ Condition monitoring of control cabinets.



AIOT Incident Surveillance System

2 Level Crossing Event Detection

- ✓ People loitering.
- ✓ Vehicle alert area intrusion.



4 Slope Risk Monitoring

- ✓ IOT sensor detection.
- ✓ Rockfall alert.



Feature

1. Support network video streaming via RTSP, with video resolution support for D1/720P/Full HD and other resolutions. Hardware configuration is based on different resolution requirements.
2. Support for use with thermal imaging cameras for environment intrusion detection, vehicle passage detection, vehicle parking detection, and smoke detection, etc.
3. Multiple application functions.
4. Data report content. Data reporting content includes event category, occurrence time, occurrence lane, occurrence vehicle type, and camera number. Real-time event video footage is also reported (the event location is marked on the screen).
5. Incident video data
Event recording data can be set by the video event detection workstation, with a maximum recording time of up to 4 minutes.
6. Hardware abnormality recovery can be performed remotely.
The video event detection workstation can perform remote communication resets.
In the event of a power outage, the system will restart, automatically perform an initialization process, and resume normal operation.
The system has a Watch-Dog function, which can automatically perform an initialization process.

