



Rich & Selectable
AI Models



Flexible & Easy
Install



Real-time Recognition
Result & Data



【 Smallest Edge AI Recognition Camera In World 】

VISION

Recognition Redefined By You



昱辰資訊有限公司
Digital System Integration

VISION

Smallest Edge
AI Recognition Camera



Features

All-in-One Smart Recognition Device : Easy Setup, Instant Use



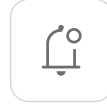
Your Way with AI

Versatile AI Recognition :
People, Objects, Plates,
Thermal - Customizable to
Needs.



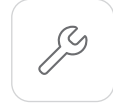
Flexible Connectivity

WiFi and 4G Capable: Choose
the Best Connection for Your
Environment, Ensuring
Uninterrupted Functionality.



Instant Notifications

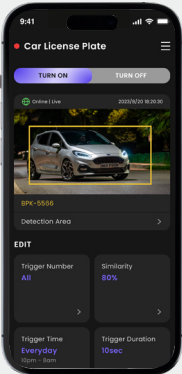
AI recognition results linked
with messaging apps for
real-time user alerts, enabling
prompt event and status checks.



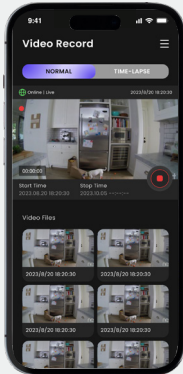
Sleek and Easy to Install

Highly integrated, No Complex
Peripherals, Easily Adaptable
to use.

Function



Recognition Function
Settings



Video Playback
Recording



LINE Alert
Notifications

- Efficient AI with Low Energy Usage
- Tiny-sized for easy use and installation
- Includes speaker and mic for on-site interaction
- Full HD video & images for high-definition visuals
- Built-in IR for clear night recognition
- 24/7 AI detection for constant field monitoring
- Real-time video recording and instant playback
- Selectable AI Models by users
- Recognition results through messaging apps



Vision Product Spec

CPU	Quad-Core ARM SoC & AI Accelerator	Thermal	768 FIR pixels
OS	Linux		Detection Angle : 55°
Edge AI	Selectable AI Models	LED	Red/Green/Blue
Lens	5-megapixel, Day/Night Imaging	Power	5V/3A, USB-C
	120° Wide-Angle Lens, No Distortion	Install	1/4-inch Locking Hole
Network	Ethernet/WiFi, 4G/LTE	Size	80 x 59 x 34mm
Spk/Mic	Mono 1W Spk / MEMS Mic		

Digital System Integration Co., Ltd

昱辰資訊有限公司

| TEL:02-25166750#1001 | Website:www.dsi-solution.com | Email:sales01@dsi-solution.com



Official Website



YT Channel