

SEC405G/505G IoT Edge Gateway

The SMANEX SEC405G/505G IoT Edge Computing Gateway is a 4G/5G programmable network device equipped with essential protocols and Node-RED for customization. It supports the embedded firmware that provides a bundle of functionalities to optimizing applications in Smart Energy, Oil&Gas, and Industrial Automation. Additionally, it provides various interfaces and connectivity such as Cellular, Ethernet, RS232/485, DI/O, WiFi, and SD-LAN, Modbus, MQTT/HTTPS protocols, all compatible with AWS and Azure platforms that helps for time-to-market in cost-effective solutions.



Hardware Spec

Characteristics	CPU	Dual-core ARM A53 CPU1.3Hz
	RAM	1GB
	Flash	32MB
	eMMC	4GB
Interfaces	Ethernet	1*WAN/LAN, 4*LAN 10/100/1000Mbps
	Serial Port	(RS232*1, RS485*3)/ (RS232*1, RS485*2, DI/O*1) Optional 15KV ESD Protection
	Console	RS232
	USB	1*USB2.0
	Rest Button	1
	SIM	2 Slots (1.8V/3.3V)
	Wi-Fi	WiFi6 IEEE802.11a/b/g/n/ac/ax
	Antenna	3G/4G: SMA*2 5G: SMA*4 WiFi*2 (GPS is optional)
Power	Power Input	DC 5-48V, POE (optional)
	Consumption (operation)	7.84W (3/4G) 8.97W (5G)
	Consumption (stand-by)	319-682 mA@12VDC
Ambient Temperature	Relative humidity	≤ 95% (no condensation)
	Operating Temperature	-40 ~ +75°C
	Storage Temperature	-40 ~ +75°C
Product Appearance	Dimension	143.55*108*49.35mm
	Protection Rating	IP30
	Weight	556g
	Installation	Din-rail

Software Spec

Network	Connectivity	3G/4G LTE-FDD: B1/B2/B3/B5/B7/B8/B20/B28 LTE-TDD: B34/B38/B39/B40/B41 WCDMA: B1/B2/B5/B8
	WAN	Static IP, DHCP, PPPoE
Network Protocols	IP Routing	Static Router, RIP, OSPF (optional)
	DDNS	DYDNS, CHANGEIP, 88ip, 3322
Security	Firewall	NAT, PAT, DMZ, Port Forwarding, Virtual Server
	VPN	L2TP, OpenVPN, SD-LAN
Reliability	Redundancy	Keep Session
	Link On-line Detection	ICMP, Internet Control Message Protocol
	Embedded Watch Dog	Hardware Watch Dog
Industrial Protocol	Collection Protocols	Modbus TCP Master, Modbus RTU Master
	Upload Protocols	Modbus TCP Client, MQTT Client
Development	Node-RED (for SEC405G)	
Management	Configuration	Local or Remote HTTP, HTTPS, Telnet, SSH
		Parameter Backup and Recovery
		SNMP v2c
		Configuration via cloud platform
	Upgrade	Local upgrade
		Remote upgrade via WEB/TFTP/FTP
		Upgrade via cloud server
	Log Management	Local and remote log management
	Reboot	Remote reboot with scheduling
	PING	Internet diagnosis

More Model Options



Industrial 4G Gateway
SR402

Serial Device
Server SD101-I

Ethernet Switch
SW3110GP-2GF

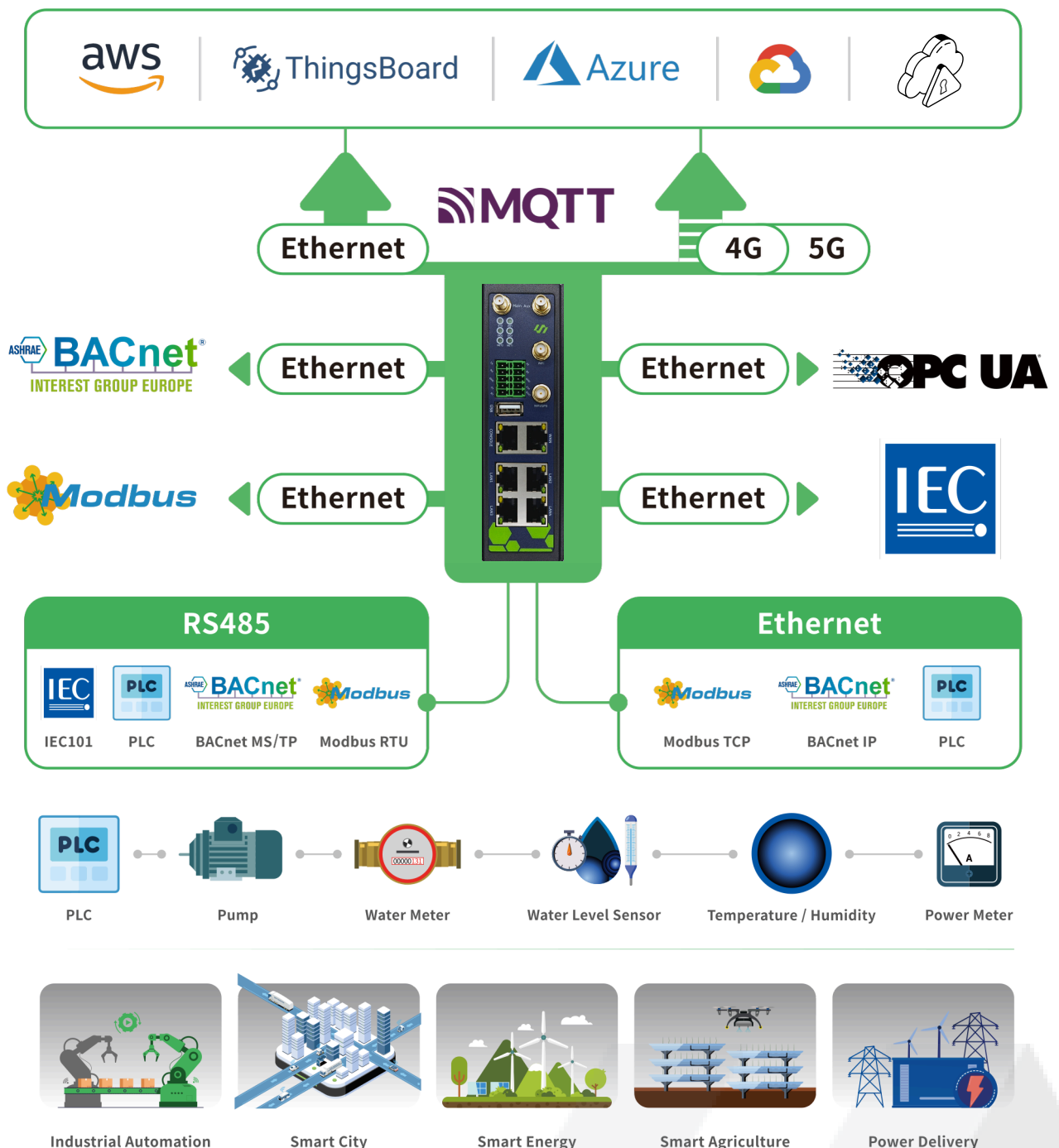
Ethernet Switch
SW5124-4F



Edge Computing AIoT Solutions

SMANEX Co., Ltd is committed to delivering reliable industrial communication products, and integrated solutions. We specialize in machine-to-machine (M2M) communication and various Internet of Things (IoT) applications, including green energy, smart grid, smart building, environmental monitoring, oil & gas, and industrial automation, with a focus on enhancing productivity, values that supporting ESG goals for a more sustainable and responsible future.

- Providing Reliable Industrial Communication Solutions.
- Enabling The Seamless IoT Integration.
- Powering Key Industries.
- Edge Computing for Real-time Data Processing
- Smartization for Intelligent Operations



Scenario

