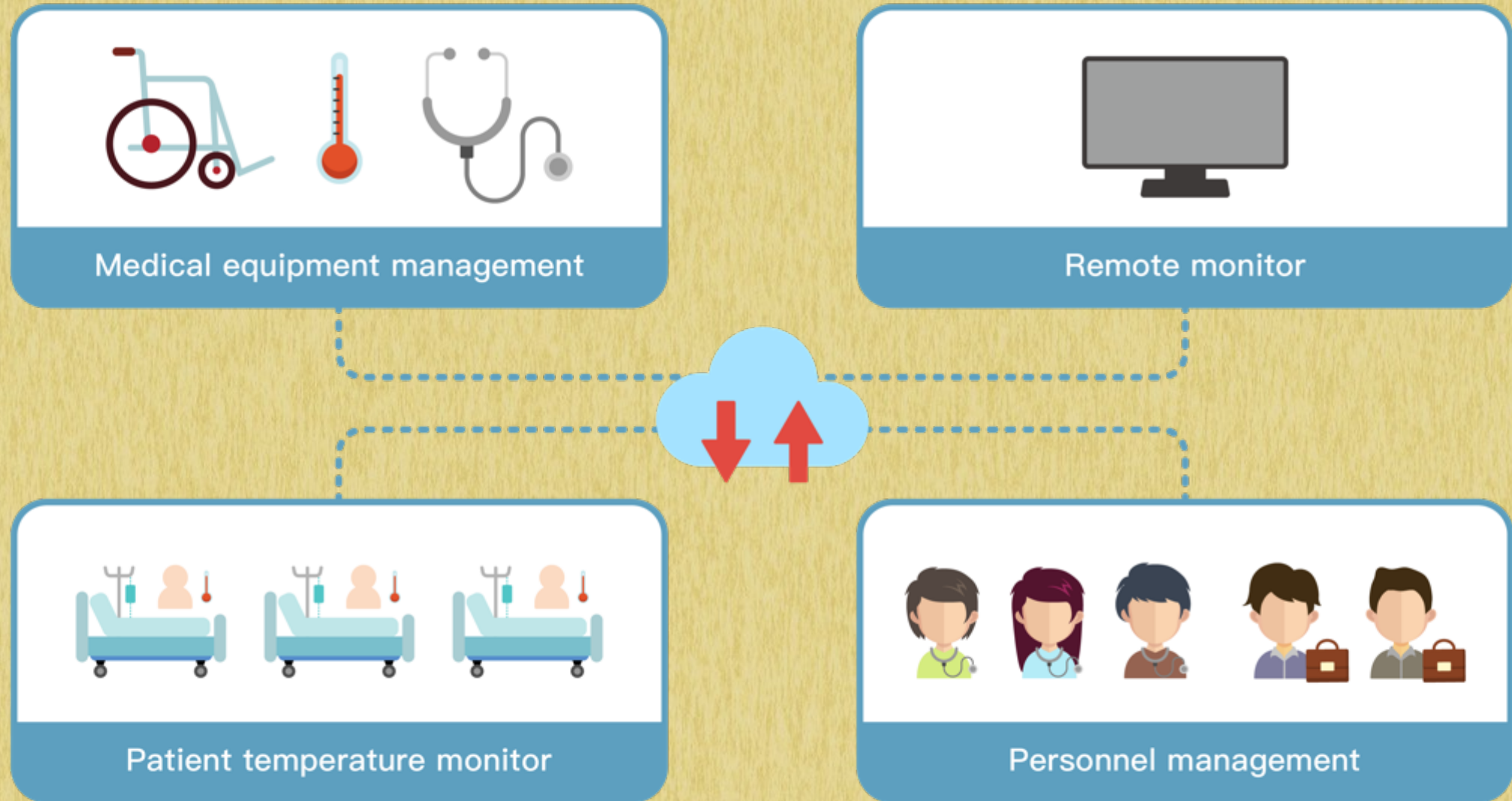


TRACMO Temperature and Location Tracking Solution

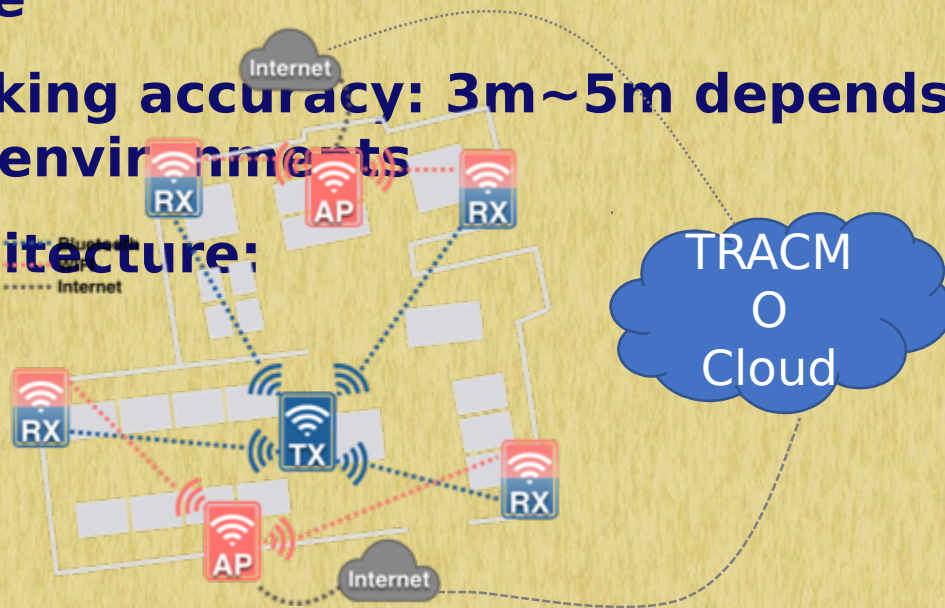
TRACMO INC,
A Knectek Labs Company

Tracmo Location / Temperature Tracking Solution

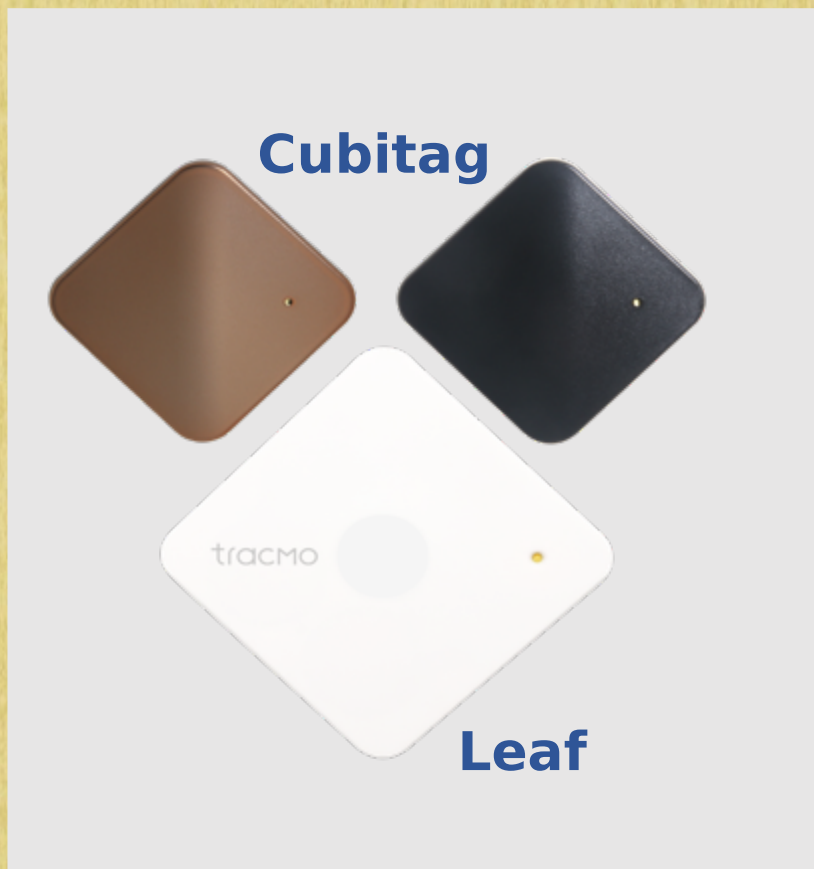


Infrastructure - Tracmo Station

- **World's smallest single-chip omni-antenna WiFi/Bluetooth sensor gateway**
- **Using WiFi (2.4Ghz) for the cloud connection**
- **Over-The-Air update**
- **Ultra Low Power, ideal for powering through cascade PoE cable**
- **Tracking accuracy: 3m~5m depends on the deployments and environments**
- **Architecture:**



Infrastructure - Tracmo Trackers



- Replaceable battery (up to 18 months)
- Bluetooth 5 Technology
- IP55 (Cubitag)
- 35mm x 35mm x 9mm; 8 gram (Cubitag)
- 55mm x 55mm x 3mm; 12 gram (Leaf)
- iOS / Android Support
- Compliance: FCC/NCC/IBF/CE/IC

TRACMO Temperature and Location Tracking Solution

-TaaS (Temperature as a service)

Body Temperature Monitoring Solution for Facilities

- **Design for Hospital/Care Center/ICU/Quarantine Center**
- **Working with iWEECARE TempPa**
- **Monitoring Body Temperatures 24x7**
- **On-Panel Alert Notifications**
- **Super Fast Deployment**
- **Share the same infrastructure with Tracmo LaaS Tracking**



Real-Time Temperature Tracking



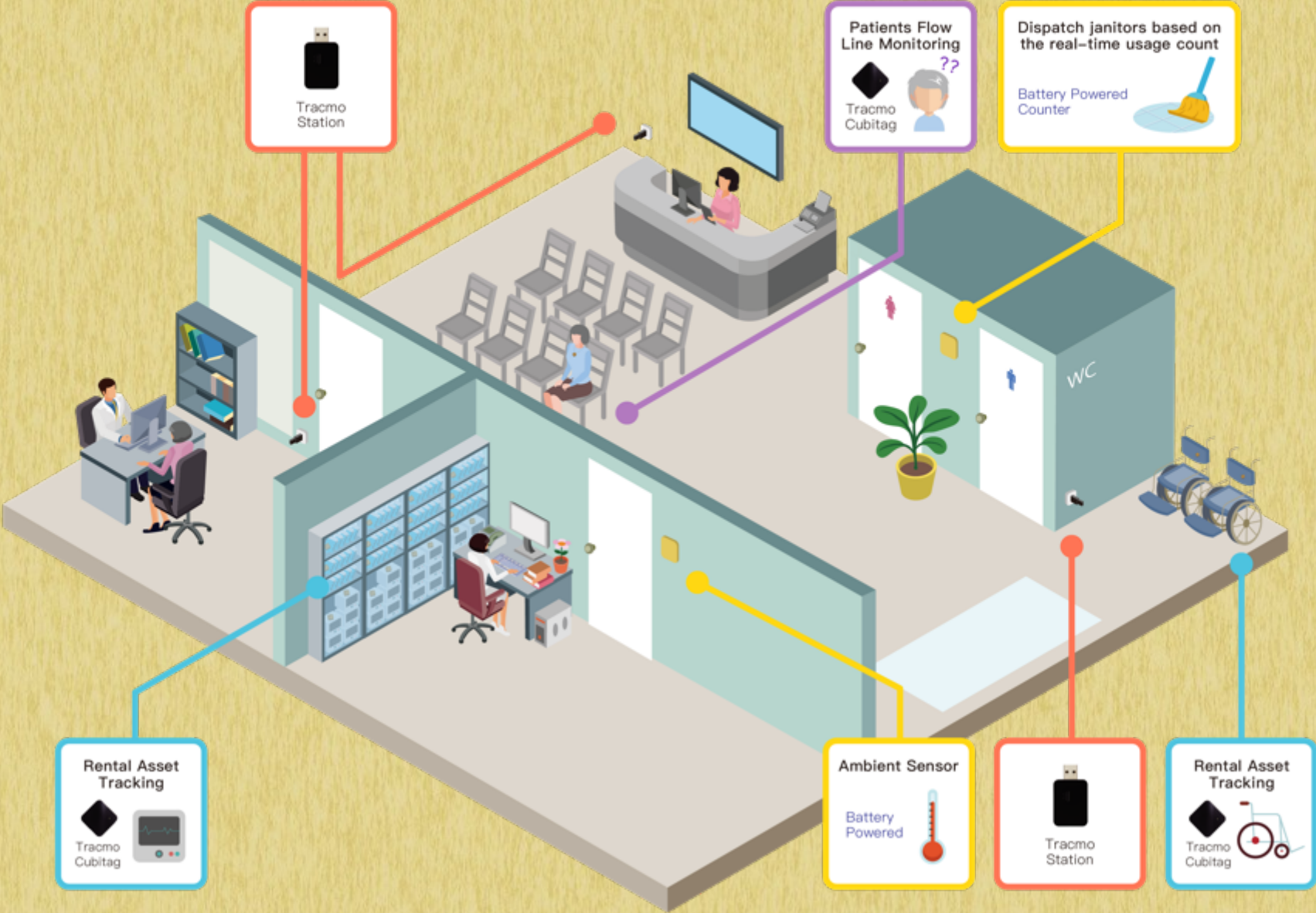
Chart Range:
Last hour
Last 24 hours
Last week

Per-Patient Measuring Chart

TRACMO Temperature and Location Tracking Solution

-LaaS (Location as a service)

Tracmo as Smart Hospital Service



Plug-n-Play Service

Using browser only

The image displays the tracmo web interface, which is used for managing IoT devices. It is divided into two main sections: a map view on the left and a device list on the right.

Map View (Left): Shows a floor plan of a building with various rooms labeled in Chinese. A red box highlights a device named "Ring" (tracMo1) located in a specific area of the map. A red arrow points from this device to the "new name" device in the list view.

Device List (Right): A table showing a list of devices. The table has columns for Status, Photo, Name, Location, Serial Number, Last Seen, Notify, Share, Battery, and Analytic. The device "new name" (tracMo20) is highlighted with a red box, and a red arrow points from it to the "Ring" device in the map view.

Status	Photo	Name	Location	Serial Number	Last Seen	Notify	Share	Battery	Analytic
Connected		tracMo19	1F-001	F0:F8:F2:C9:DE:EF	2020/04/10 21:52:04	<input type="checkbox"/>			
Disconnected		tracMo20	B1F	F0:F8:F2:C9:E2:5E	2020/04/10 17:54:33	<input type="checkbox"/>			
Disconnected		new name	B1F	F0:F8:F2:C9:E2:4A	2020/04/10 17:54:30	<input type="checkbox"/>			
Disconnected		tracMo22	B1F	F0:F8:F2:C9:DF:AF	2020/04/10 17:54:31	<input type="checkbox"/>			
Disconnected		tracMo23	B1F	F0:F8:F2:C9:DD:3D	2020/04/10 17:54:38	<input type="checkbox"/>			
Disconnected		tracMo24	B1F	F0:F8:F2:C9:E1:DE	2020/03/13 17:39:34	<input type="checkbox"/>			

Change the name easily at any time

Ring the target if it is in the pile

Advantages of LaaS

- **VERY QUICK DEPLOYMENT**
 - Deployment is quick and easy from small venues to large hospitals, even a city
- **VERY LOW MAINTENANCE COST**
 - No computer host to maintain, high availability
- **NO DATA CENTER NEEDED**
 - Only power and wi-fi for the stations are needed
 - That's it
- **EASY TO USE**
 - Use browser and phone only, no extra software installation is required
- **SUPPORT B2C APPLICATIONS**
 - It is very easy to extend the service to serve the end customers.

Fast Deployment Example (Real Hospital)

- **Over 100,000 square meters indoor area**
- **499 hospital beds, Two Campuses**
- **9-story, 2-floor underground building**
- **2-man labors**
- **Exclude crossing fire zones**
- **170 Build-in Stations installations**
- **Completed in 7 working days**

THANK YOU

