

# SoftChef

Let's make IoT a reality.



Smart Aquaculture IoT Platform

## Aquaculture Intelligence Solution

Smart Aquaculture IoT Platform with Artificial Intelligence

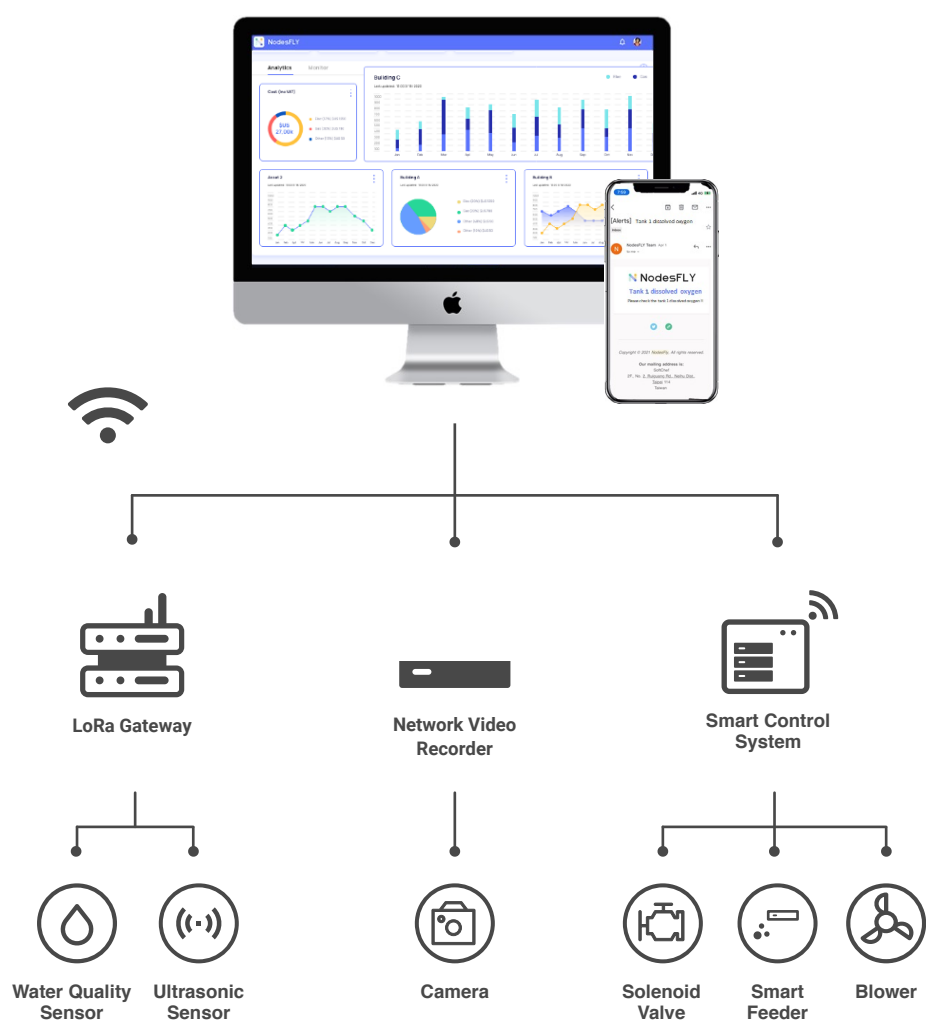


### Realize Remote Management & Predictive Analytics

SoftChef offers turn-key IoT solution for Smart Aquaculture. Fishermen can add new devices to SoftChef's Smart Aquaculture IoT Platform by scanning QR codes and easily scale up. SoftChef's Smart Aquaculture IoT Platform provides water quality monitoring, remote management, real-time warning and data analysis. Through Web/Mobile App, fishermen can gain data of water tank pH, dissolved oxygen, turbidity, water level and get visualized conditions of water quality & abnormal records. Also, fishermen can manage smart devices remotely, set automated tasks to track water tanks 24 hours a day and get real-time alerts when abnormal events occur.

With artificial intelligence and aquaculture expertise, Smart Aquaculture IoT Platform can transform domain knowledge into AI models and realize predictive analysis & smart management through continuous training of machine learning models.

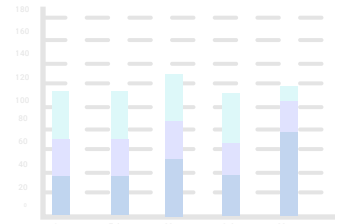
## Architecture



## Data Visualization & Remote Management

### Monitor 8 Water Quality Parameters

- Ammoniacal Nitrogen(NH3-N)
- Nitrate ion (NO3-)
- Oxidation-Reduction Potential (ORP)
- Dissolved Oxygen (DO)
- pH
- Salinity
- Turbidity
- Temperature

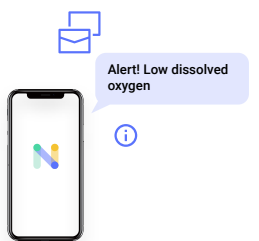


### Real-time Management

- Access real-time image (underwater/above water surface)
- Monitor water level and abnormal events
- Control smart feeders remotely
- Control water flow remotely

### Agile Operations via Mobile App

- Instant alarms of abnormal events
- Quick access to electricity report
- Get visualized water consumption



## Smart Assistance & Control



### AI Decision Support

Our platform is able to provide water quality prediction, recommendation of maintenance & best practices to help increase productivity & stability.



### 24/7 Water Quality Monitoring

Fishermen can check graphs of pH, turbidity, DO and more data anytime, monitor changes 24/7 and get alarms when abnormalities occur.



### Remote-feeding

Fishermen can control smart feeders from afar while tracking the condition of the tanks and get recommended parameters for feeding & water adjustment.



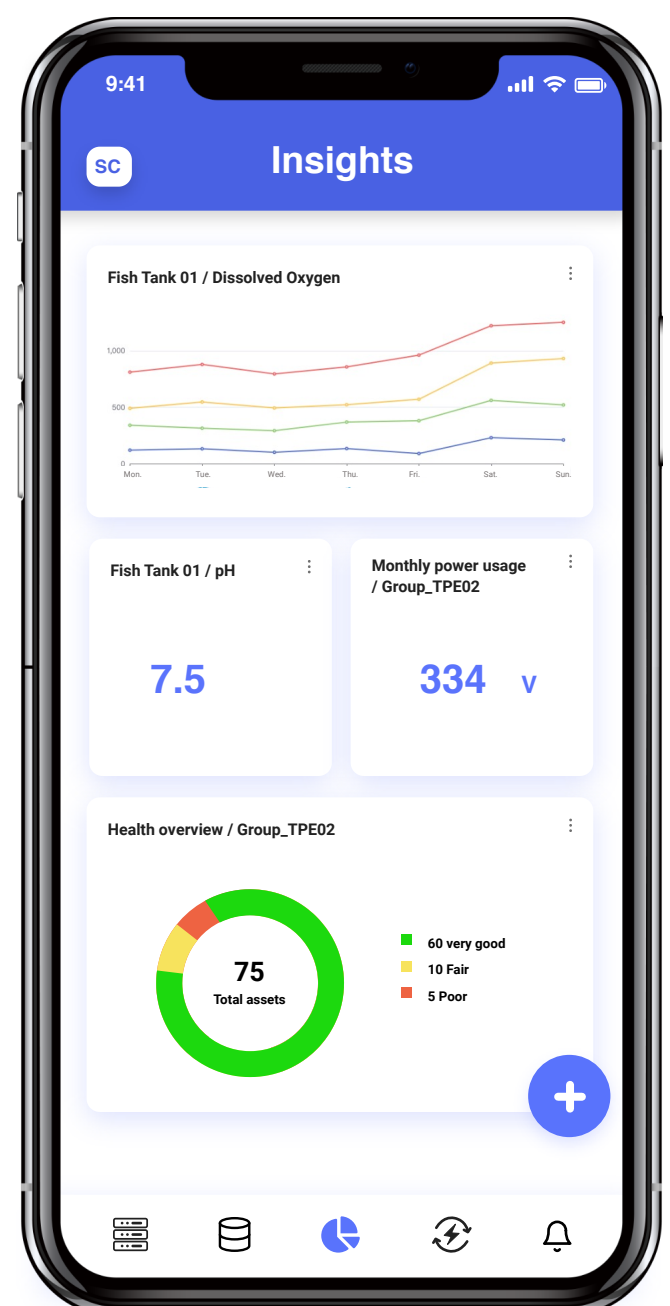
### Real-time Monitoring

Fishermen can view real-time videos of the tanks (underwater/above surface) via Web/Mobile App to check feeding & sanitary conditions.



### Routine Tasks Automation

Fishermen can set auto-adjustment of water temperature, auto water exchange, auto-feeding and more to keep the tanks at optimal conditions effortlessly.





**SoftChef**

<https://www.softchef.com.tw/>

## About us

SoftChef is a solution provider focusing on smart city IoT applications. We offer multiple IoT management platforms leveraging AWS serverless architecture and smart gateways that support machine learning and AI-driven applications.

We help businesses accelerate digital transformation through diverse solutions. Our tech-innovative solutions can adapt to different verticals and make devices and cloud work seamlessly together. We have successfully helped many businesses achieve digital goals by leveraging solutions such as, smart agriculture, smart streetlight, smart electricity, smart energy, smart factory, asset tracking and more. We are here to help businesses accelerate IoT deployment and increase business values in today and tomorrow's world.



Smart streetlight  
management platform



E-bike management  
platform



Water leakage  
detection platform



Energy management  
platform

