

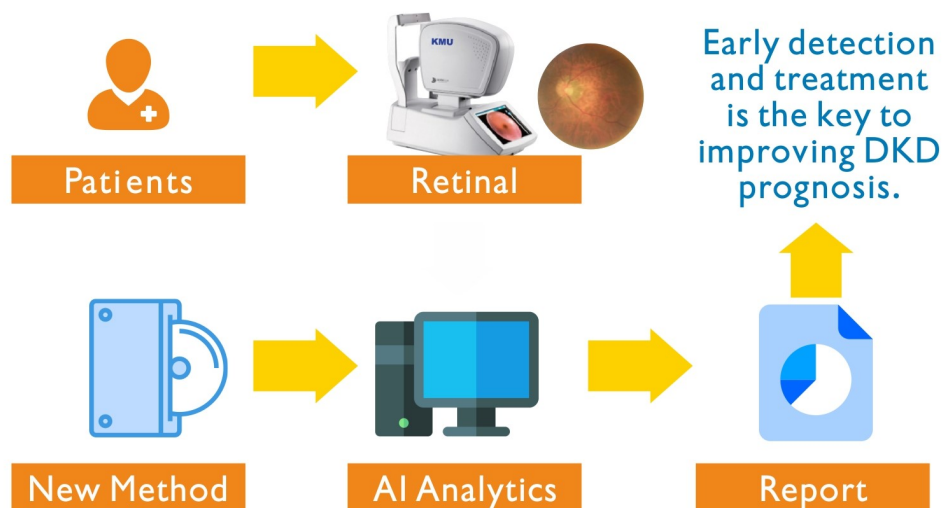
AI Prediction of DKD in Retinography

Background

Diabetes mellitus is a world-wide public health problem and its prevalence is growing. Diabetic kidney disease (DKD) could lead further end-stage kidney disease and dialysis. In order to provide a medical treatment for DKD patients and prevent its progression, a method is developed to identify and classify who is in the high risk of DKD.

Technology Overview

Artificial Intelligence (AI) has been used to analyze the severity of retinal lesions in patients with diabetic retinopathy. The team used the progressive fundus images and paired with the examination data to predict the renal failure progression. This AI technology can predict the stage of nephropathy with simple, safe and easily accessible fundus images that allow doctors to diagnosis in advance which stage of nephropathy the diabetic patients are in.



Benefits

- Non-intrusive detection system
- Pioneer in AI analytics of Retinography
- Suitable for periodic inspection and telehealth

Key Patents

TW 111100229 | PCT/CN 2022/071590 | US-PRO 63/136,852

Seeking

Development Partner and Licensing