

QOCA[®] smart device

QOCA ecg101

QOCA ecg 101 is designed for measuring single lead ECG and calculating the heart rate in hospital or at home. An unique wearable design improves the discomfort of long time wearing. Users can collect and stream continuous ECG signal even in shower, for up to 14 days without having to replace the battery. QOCA ecg provides open and secure data architecture for AI research and developing.



Ward Mode

- Efficient and Accurate
- Alarm for Emergency
- Smart Patient Tracking

In-Ward
Monitoring

1 SENSOR
3 MODES

14Days Holter

Holter Mode

- Flexible ECG Recording
- Light and Comfortable
- AI-supported Analysis and Report
- Measure and Store for up to 14 days



QOCA ecg101 w/ Foam Patch



QOCA Gateway



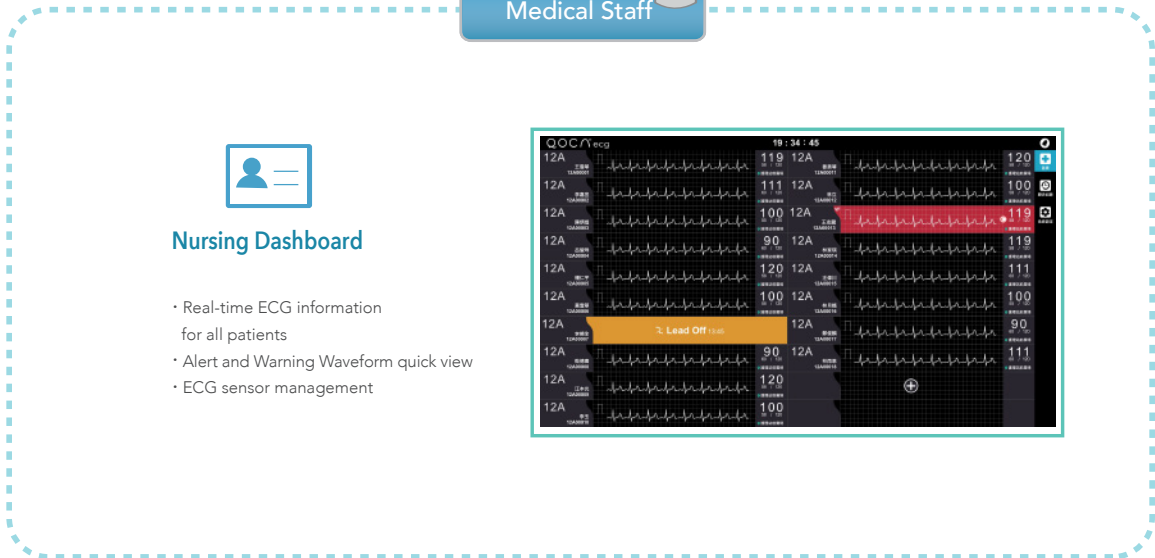
QOCA ecg101 w/ Patch

Tele-monitoring

Tele-monitoring Mode

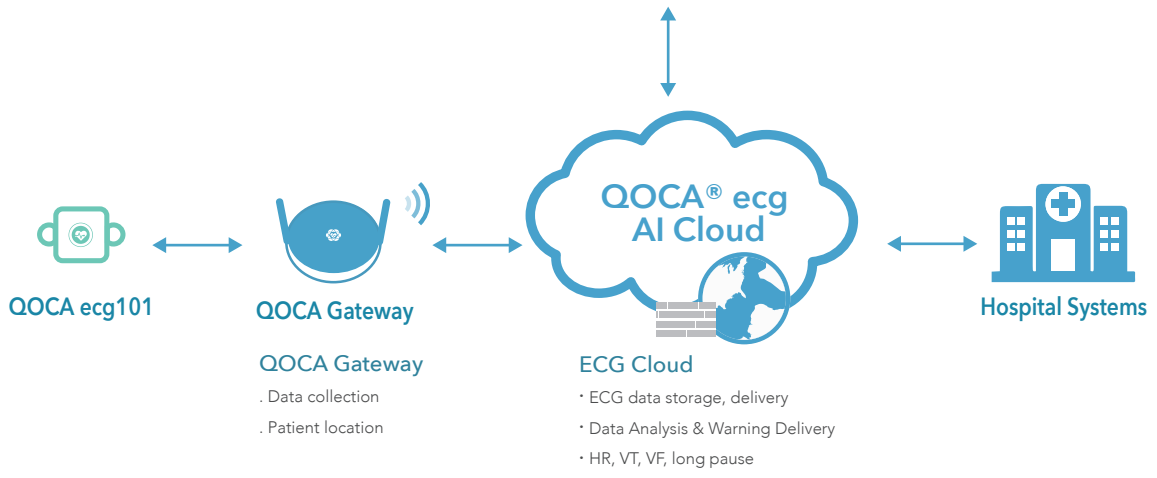
- Regular / Trigger Recording
- Irregular Heart Rhythms
- Alarm for Abnormal Situations

In-Ward Monitoring



Nursing Dashboard

- Real-time ECG information for all patients
- Alert and Warning Waveform quick view
- ECG sensor management



QOCA ecg101

QOCA Gateway

QOCA® ecg AI Cloud

Hospital Systems

QOCA Gateway

- Data collection
- Patient location

ECG Cloud

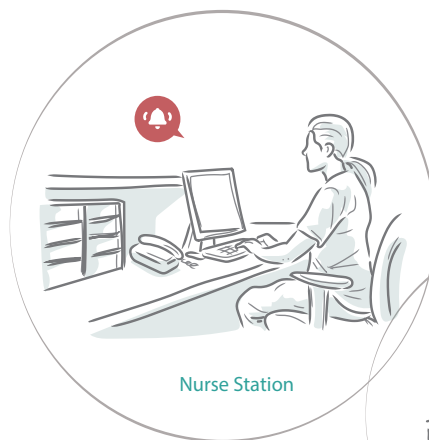
- ECG data storage, delivery
- Data Analysis & Warning Delivery
- HR, VT, VF, long pause

Smart Patient Tracking

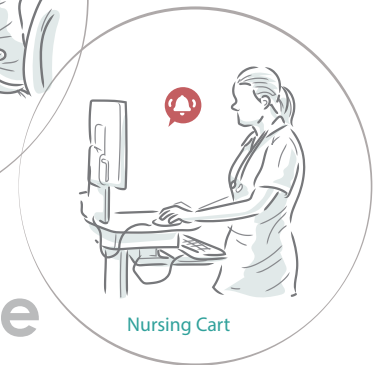
- Patient Location Information

Efficient and Accurate

- Easy to setup and put on within minutes
- Accurate ECG data for doctors and nurses



Nurse Station



Nursing Cart

Ward Mode

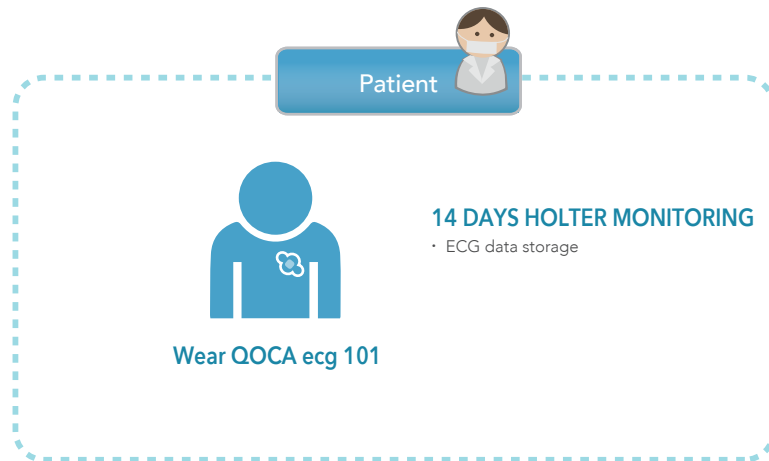
14Days Holter

Flexible ECG Recording

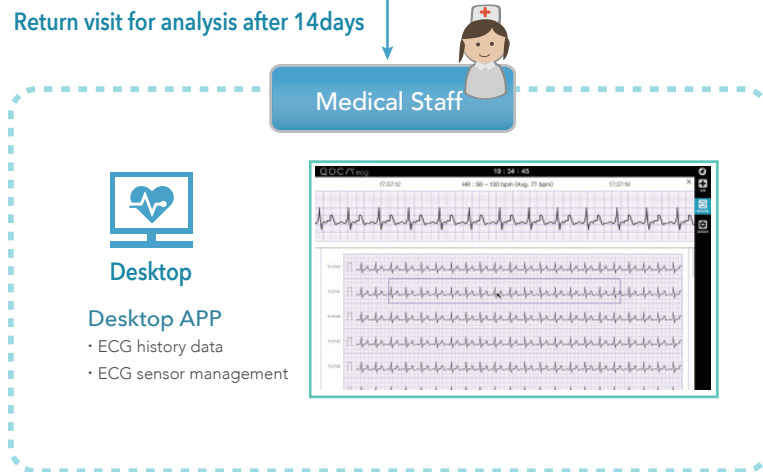
- Up to 14 days ECG recording

Light and Comfortable

- Light-weighted, compact, comfortable
- Continue the day-to-day activities like shower, exercise



Return visit for analysis after 14days



ECG Cloud

- ECG data storage, delivery
- Data Analysis & Warning Delivery
- HR, VT, VF, long pause



Holter Mode



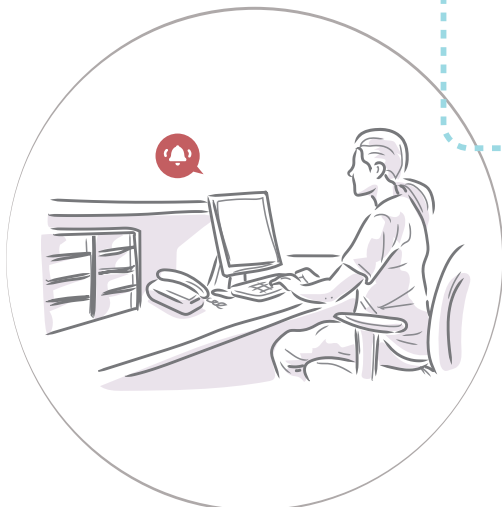
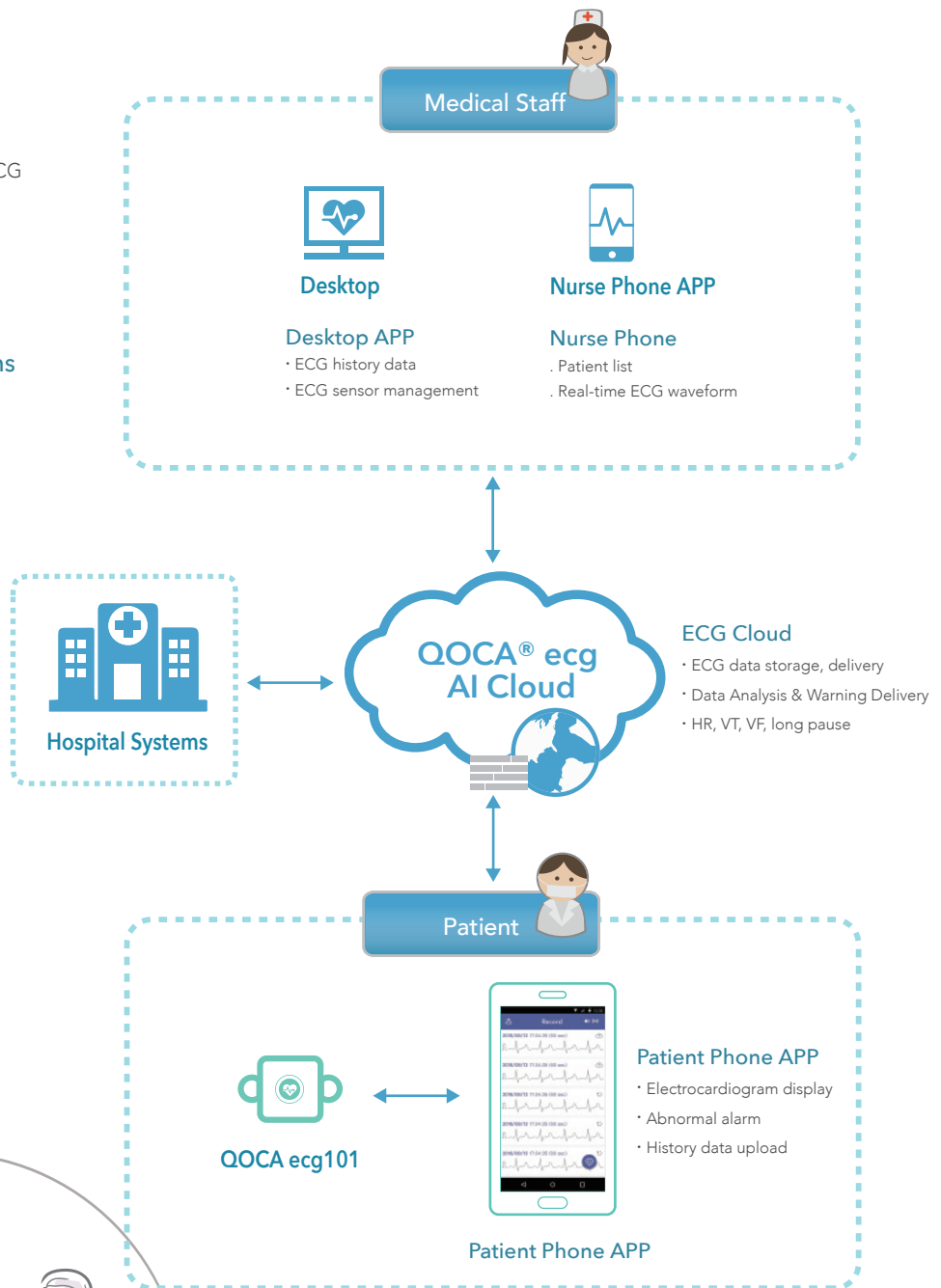
Tele-monitoring

Regular / Trigger Recording

- Spot check (e.g. recording 90s of ECG every 10 mins)
- Record on demand
- Patient trigger event recording

Alarm for Abnormal Situations

- Send alarm to medical staff
- By SMS or QOCA ecg APP



Tele-monitoring Mode

QOCA[®] smart device

QOCA ecg1201

Superior Quality of Care – the first and only compact, wireless, and cloud-based 12-lead ECG available for home use. QOCA ecg 1201 is wireless, digital and high quality. It utilizes smart mobile devices and manages in the cloud. There are many places with needs for accurate ECG but could not get it before – now QOCA ecg 1201 is the perfect solution!



Cost-Efficiency

- Reduce unnecessary ER visits
- Mitigate errors and costs from wrong lead placement
- Provide timely diagnosis and management decision

Time Efficient











- Perform a standard 12-lead ECG in 3 minutes
- Save 70% procedure time
- Streamline office workflow
- All ECGs are managed in the cloud with easy EMR integration

Better Quality of Care

- Simplify lead placement to reduce errors and variations
- Enable remote care and monitoring
- Provide timely care anytime from anywhere
- Easily applied by patients at home, requiring minimal training

Product spec

QOCA ecg101

	 In-Ward Monitoring	 14Days Holter	 Tele-monitoring
Patch	Foam Patch Patch 	Patch 	Foam Patch Patch 
Charger	QOCA ecg101 Charger Pack 	QOCA ecg101 Charger Pack 	QOCA ecg101 Charger 
Gateway	QOCA Gateway (X12) 	-	Smartphone (iOS/Android)
Patient Phone	-	-	QOCA ecg App
Nurse Phone	-	QOCA ecg App	-
Desktop	QOCA ecg ward dashboard	QOCA ecg holter analyzer	QOCA ecg management tool
Cloud System	QOCA ecg AI cloud	-	QOCA ecg AI cloud



QOCA ecg101
up to 14 days



QOCA ecg102
up to 5 days

Channel	Single Channel (Lead II)
Recording Mode	Configurable (Continuous/ Event record/Spot Check)
Sampling Rate (Hz)	Configurable (128, 256, 512, 1024)
Connectivity	Bluetooth Low Energy
IP Rating	IP26
Weight	QOCA ecg101 Sensor : 24.5 ±0.5g QOCA ecg102 Sensor : 18.5 ±0.5g
Dimension (mm)	QOCA ecg101 Sensor : 39 x 39 x 11.2 QOCA ecg102 Sensor : 39 x 39 x 8.2
Indicator	2 LEDs
Button	Power / Event trigger

QOCA[®] smart device

Wi-Fi Otoscope Pro

- Support AR assisted diagnostics
- Support EMR
- Archiving and tracking of patient data
- Sharing and consulting patient's status in real-time



QOCA Q-tube Wi-Fi Otoscope Pro awards improved clinical experience and diagnostic quality for both the physician and patients. The simplified interface allows the physician and patient to have a shared view on diagnostics such as the ear canal and tympanic membrane.

The unified design allows easy capturing of clear images, and tracking of patient data. The diagnostic data is seamlessly archived to avoid or justify medical disputes.



Great Image Quality



Video and Photo capturing

IMPROVING AND ENHANCING THE PHYSICIAN AND PATIENT EXPERIENCE AND CLINICAL QUALITY

- Wireless design
- Great image quality
- Real time video streaming & on-line photo sharing
- Snapshot during video recording and viewing
- Li-ion battery
- Power saving
- Rapid wake up from hibernation
- Adjustable focus



reddot design award
winner 2017

